



Installation Instructions

#2010 1963-1974 Small Block Power Steering Conversion Kit

Parts: Power Steering Pump, Power Steering Pulley, Crankshaft Pulley (add to existing pulley), Slave Cylinder, Control Valve, Draglink, Pitman Arm, Pump Bracket Set, Frame Bracket, Hose Set, Pump Cap, 1 Quart of PS Fluid, Fastener Kit (includes the Pump Nut & Key, Frame Bracket Retainers, Pump Bracket Bolts, Hose Clamp & all the hardware).

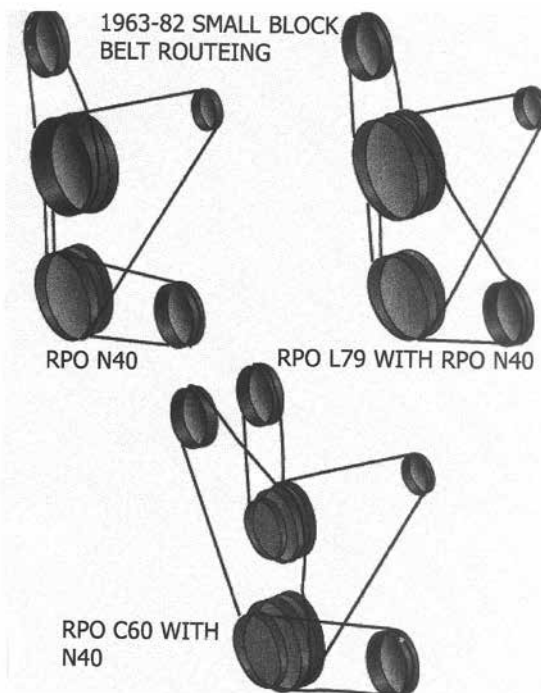
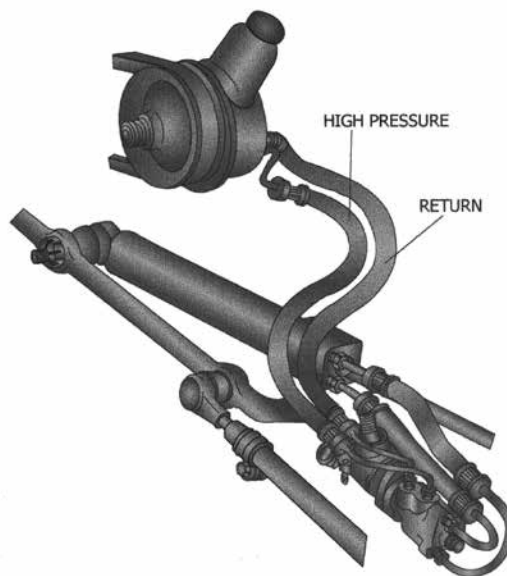
Instructions for Power Steering Control Valve (PSCV) & Steering Adapter 1963-82 Corvette with Power Steering

1. Remove PSCV

- Raise vehicle & support it on stands so that front wheels can be turned fully from left to right.
- Disconnect the 2 hydraulic hoses from the ends of the PSCV. Allow fluid to drain into a container. Make sure to note the location of the hose so that you install them back in the correct location (this is very important). Remember, the hoses enter the valve at a slight angle so the ports will not be cross-threaded when the hoses are re-installed.
- Disconnect the two remaining hydraulic hoses from the PSCV.
- Remove the valve clamp cap screw at the relay rod.
- Remove Pitman Arm Nut & separate pitman arm from tapered stud of valve. A "pickle fork" is recommended for this operation.
- Unscrew valve body from relay rod.

2. Installing PSCV

- Put PSCV back on in the reverse order. Torque pitman arm nut to 45 ft. lbs. Torque valve adapter clamp to 20 ft. lbs.
- Valve is Pre-Greased at factory. Do not grease.
- Fill system with new power steering fluid.
- Check for leaks and repair if needed.
- We recommend that you change all 4 hoses.



100 Classic Car Drive, Reedsville, PA 17084
(877) 4AAAdirect or (877) 422-2347 • Fax: 717-667-3174
Email: customerservice@AAAdirect.com • www.AAAdirect.com



3. Adjusting PSCV and Bleeding System

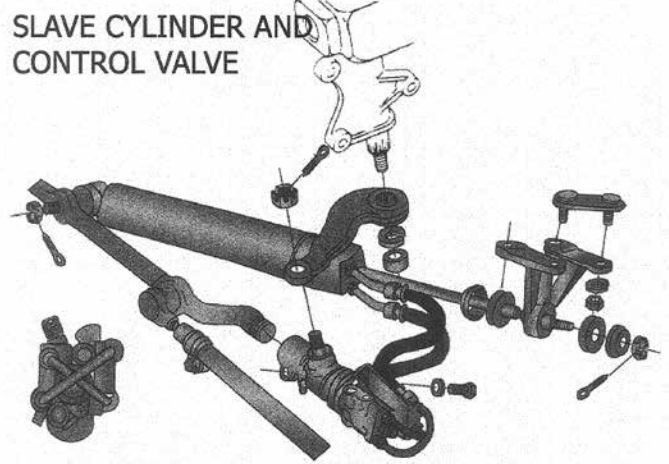
- a) With power steering reservoir full, start engine for a few seconds, then shut it off. Refill the pump reservoir. Do not put your arm or hand inside the steering wheel before PSCV is properly adjusted.
- b) Repeat step A until pump reservoir remains full and constant.
- c) If centering is needed, remove metal cap on end of PSCV and adjust centering nut while engine is running at 1500 RPM. Wheels will turn left or right as nut is adjusted. Once wheels are both straight, replace cap. Metal Cap is located on the end of the PSCV below the 2 power steering hoses that loop over one another.
- d) Turn steering wheel full left and then full right (lock to lock) and for a few seconds - this bleeds the system. Repeat if needed.
- e) Refill pump reservoir if needed.

CAUTION: Do not put hands or arm inside wheel until PSCV is properly adjusted. Wheel may turn to left or right by itself. If this happens, adjust the PSCV.

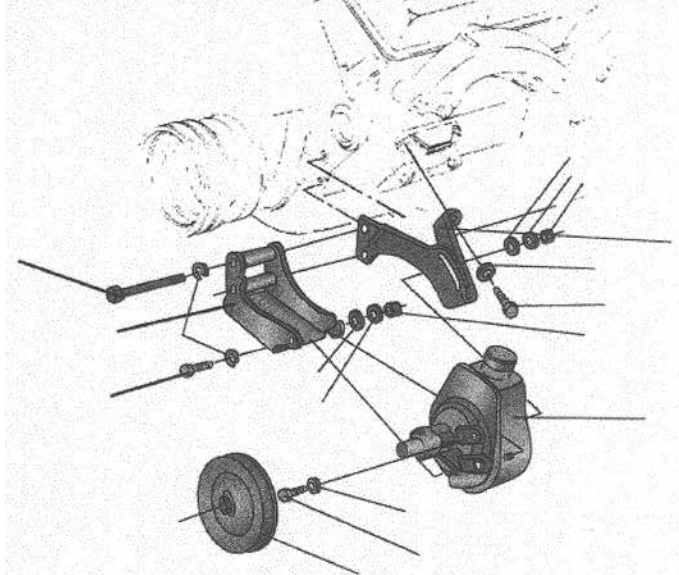
4. Final inspection

- a) Check Drive belts and re-adjust tension if needed. Always replace frayed or glazed belts at this time. Belt will squeal if it's slipping.
- b) Make sure the hydraulic hoses do not twist or interfere with the adjoining hoses or adjacent chassis parts.

SLAVE CYLINDER AND CONTROL VALVE



SMALL BLOCK PUMP MOUNTING



100 Classic Car Drive, Reedsville, PA 17084

(877) 4AAAdirect or (877) 422-2347 • Fax: 717-667-3174

Email: customerservice@AAAdirect.com • www.AAAdirect.com

