

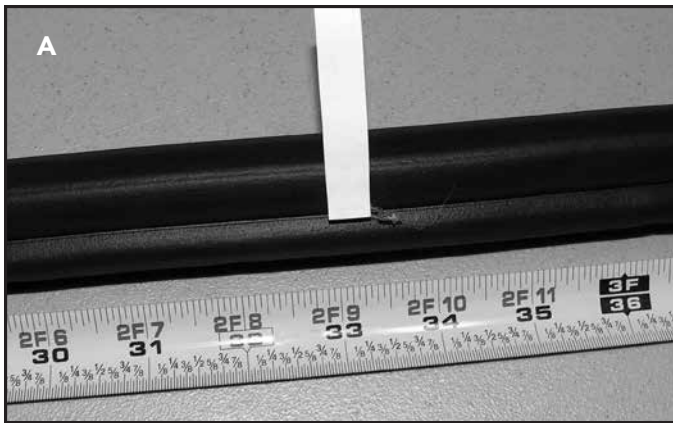


## Installation Instructions

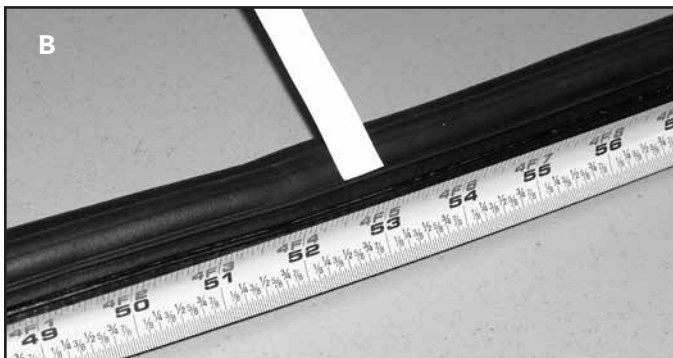
### #52335 1984-1996 Rear Hatch Weatherstrip

Thank you for purchasing this quality 1984-96 Rear Hatch Weatherstrip for your Corvette from CA!

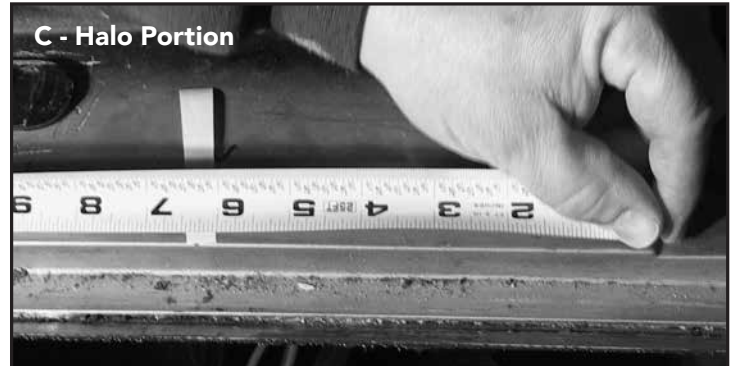
In order to properly install and handle this piece, please observe the following installation procedures: Lay weatherstrip flat on a table. It will resemble the letter "D".



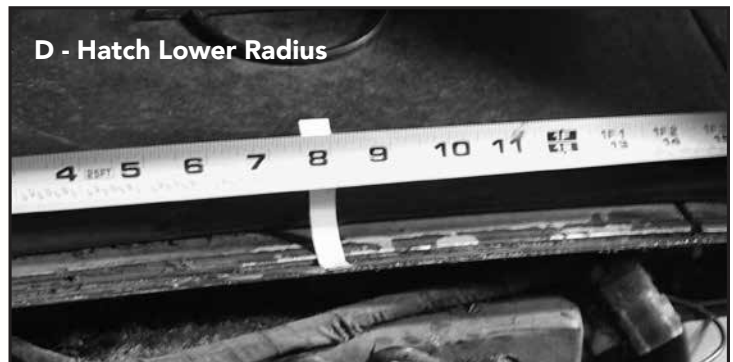
**A.** Measure the long straight edge and mark the center with masking tape or a Post-it Note.



**B.** Measure the long side arc and mark the center with masking tape or a Post-it Note.



**C.** Halo Portion — Find the center of the halo portion of the car and mark that with the masking tape or Post-It note.



**D.** Hatch Lower Radius — Measure the center of the hatch lower radius and mark it with masking tape or a Post-It note.

*Continued on next page*

100 Classic Car Drive, Reedsville, PA 17084  
(877) 4AAAdirect or (877) 422-2347 • Fax: 717-667-3174  
Email: [customerservice@AAAdirect.com](mailto:customerservice@AAAdirect.com) • [www.AAAdirect.com](http://www.AAAdirect.com)





After center of halo portion & the hatch lower radius has been installed.

**E.** Index the center of the straight side of the weatherstrip with the top of the halo and press into place along the top edge to the point where the radius of the halo turns down on both sides. Do not do anything with the corners at this point.



**F.** Next, start in the center of the back of the car installing new weatherstrip from the center to corner turns and press into place.

**H.** Repeat same process on passenger side.



**G.** Work the excess of the weatherstrip into the driver's side corner pressing the excess from the curve parts into the corner.

**I.** This will allow the weatherstrip to fit into both corners.