



FBM650M – Installation Instructions

The NoviStretch™ FBM650M mask is easily secured using snap fasteners integrated into the design. This requires snap-head screws, supplied in the Hardware kit, be installed on the car as described below. The initial installation should require approximately 15-20 minutes to complete. After setup the mask can be easily installed and removed in just under one minute

The **FBM650M** is designed for installation on **2015 and later 6th Generation Mustangs**.

Enclosed you will find:

- FBM650M Mask
- Hardware Kit containing ten (10) snap-head screw studs; six (6) J-Clips
- Installation Instructions, special product care & warranty Information

(Please read all information carefully.)

Tools Required:

- Short handle Philips screwdriver
- Flat-Blade Screwdriver

Note: The GT350 requires alternate hardware for proper installation. This hardware may be requested, free-of-charge, at info@novigodesigns.com.



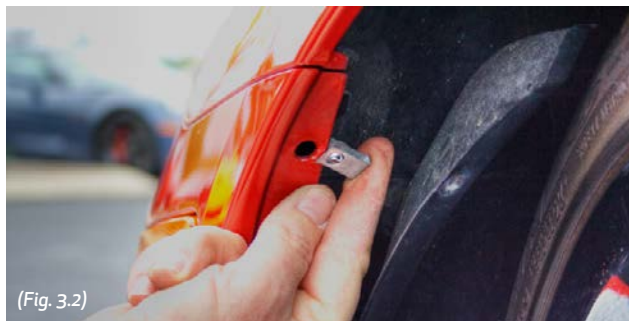
NOTE: Installation Video available to view at www.NoviStretch.com

Steps 1 & 2

Clean the bumper and surfaces under the car and the fender wells thoroughly (*tar and grease remover is recommended*). Turn the front wheels to gain easier access to the fender liner mounting screws that you will be replacing.

Step 3 (Fig. 3.1, 3.2, and 3.3)

Locate the fender liner mounting pins at the edge of the bumper inside the fender liner and remove the three (3) pins that attach the fender liner to the front bumper starting with the top pin.



Note: the pin is a male/female assembly. The male piece can be pried loose from the female piece using a flat blade screwdriver. Insert the blade of the screwdriver in the slot at the edge of the pin and twist the screwdriver causing the pin to come free of the female piece. After removing the male piece, the female piece can be easily removed.



After removing the retaining pins, spread the fender liner to gain access to the bumper and install a J-clip (Nipple side is toward the front of the car) at each of the three holes in the bumper.

Note: the J-clip is designed to go around the edge of the fiberglass bumper and serves as the nut for the screw you will be installing.

Reposition the fender liner aligning the holes in the liner with the holes in the bumper and install the snap head screws.

Step 4 (Fig. 4)

Begin the mask installation by fastening the snaps on one end of the mask to the screws just installed on the edge of the bumper.



(Instructions continue on other side)

Step 5 (Fig. 5)

Stretch the mask across the front of the bumper and attach to the other side of the car.



Note: the tension in the mask is normal and important to the overall performance of the product.

Step 6 (Fig. 6.1, 6.2, and 6.3)

Open the hood on the car and remove **ONLY** the male portion of the four (4) push pins located just behind the weather strip and install a snap head screw stud in its place. (Take care not to over tighten this screw).

Pull the top of the mask up and secure the snaps on the mask to the snap head screw just installed.



Step 7 (Fig. 7)

Pull the bottom edge of the mask down under the bumper. Check the bottom corners of the mask to ensure they are in position.



Special Installation Instructions

Intake air temperature (IAT)

When operating with the mask on the car you will note that the Intake air temperature (IAT) may be higher (20-40 degrees) than under normal operation. This is expected and while it can have a slight effect on engine horsepower output it has no adverse effect on engine operation, oil or coolant temperatures.

Cleaning and Care Instructions

- The mask can be cleaned by rinsing in water to remove any dirt or debris then squeezing the water out and let air-dry. Wash (by hand) only.

Note: It is important to the life of the mask to clean the bugs off the mask as soon as is convenient. Do not store the mask dirty.

- Use a concentrated soap solution on areas of the mask that may be particularly dirty.
- Always ensure areas covered by the mask are clean and free of sand and grit before installing the mask.

Notice: Patent Pending; NoviStretch™ Copyright © 2015 Novigo Designs, LLC. All Rights Reserved.

NOVIGO DESIGNS™ TWELVE (12) MONTH LIMITED WARRANTY Novigo Designs, LLC warrants this product against "defects in material and workmanship" for a period of twelve (12) months from the original date of purchase by the original consumer purchaser. For full details and explanation of warranty coverage, requirements and policy – please go to the "Support" section of www.NoviStretch.com. Novigo Designs (and its authorized distributors) liability is limited to the materials and workmanship of the product. Novigo Designs is not responsible for damage caused by the product to the paint or finish of the vehicle. To avoid any possible damage and to get the maximum benefit from your Novigo Designs product, carefully follow the installation and care instructions provided. Novigo Designs, LLC.