

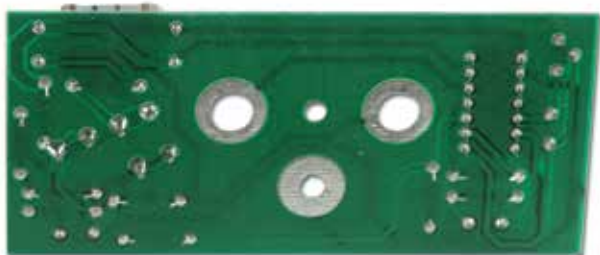


Installation Instructions

#X2484 1975-1977 Tach Circuit Board

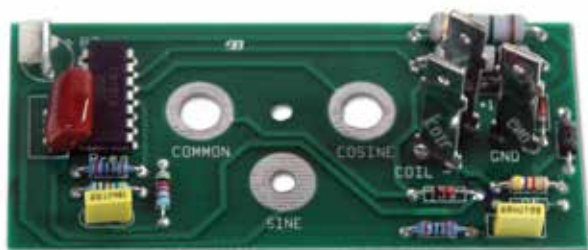
Step 1

Remove tach from car. Refer to shop/service manual.



Step 2

Set tach face down on a work surface. (Be careful not to damage the needle.) Remove the 3 nuts on bezel to access tach board.



Step 3

Remove the 3 nuts holding the tach board to the tach mechanism and lift the board from the 3 posts.

Step 4

Place the 3 phenolic washers over the 3 posts.

Step 5

Install new board with the 3 blades facing away from the tachometer.

Step 6

Install the 3 nuts back to the posts on the tach board and bezel.

100 Classic Car Drive, Reedsville, PA 17084

(877) 4AAAdirect or (877) 422-2347 • Fax: 717-667-3174

Email: customerservice@AAAdirect.com • www.AAAdirect.com

